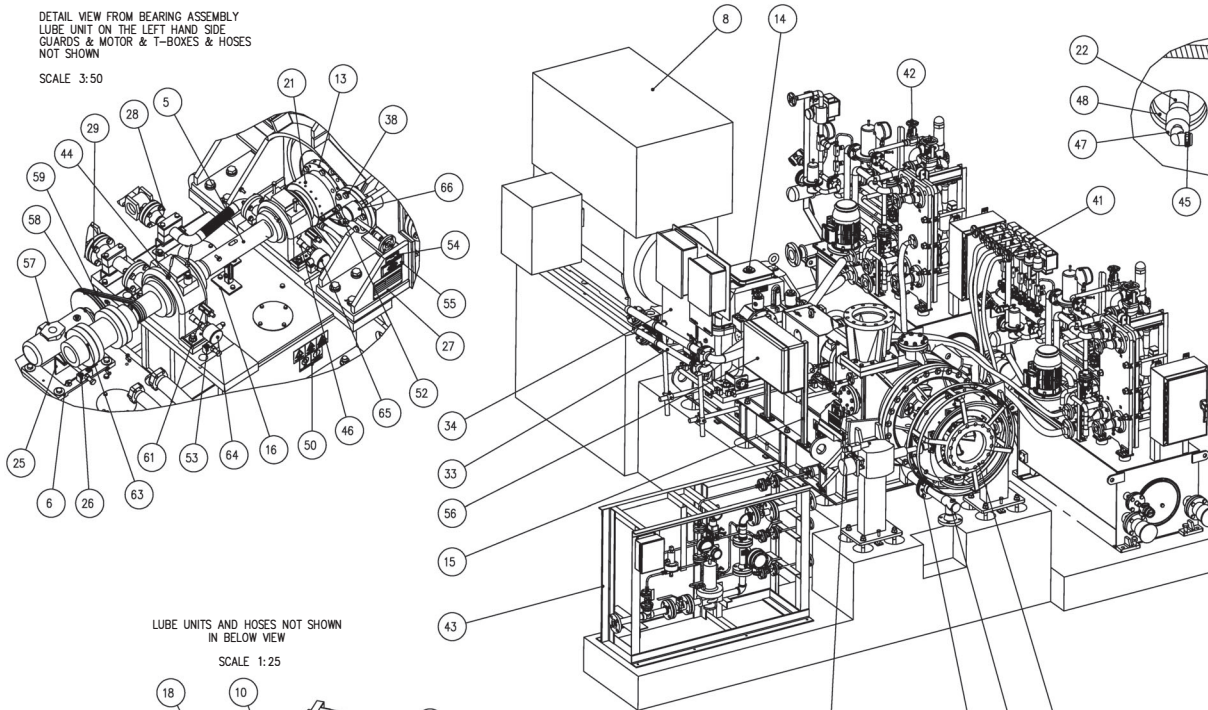


DETAIL VIEW FROM BEARING ASSEMBLY  
LUBE UNIT ON THE LEFT HAND SIDE  
GUARDS & MOTOR & T-BOXES & HOSES  
NOT SHOWN

SCALE 3:50



PART 5, BEARING ASSEMBLY NFF000191001127, SEE IOM SECTION 8E
PART 13, SHAFT SEAL ASSEMBLY NFF000191002873, SEE IOM SECTION 9E
PART 4, IMPELLER ASSEMBLY NFF000191000900, SEE IOM SECTION 9N
PARTS 62&65, COUPLING, SEE IOM SECTION 9F
PARTS 43&44, LUBE UNIT, SEE IOM SECTION 9D
PART 8, MOTOR, SEE IOM SECTION 9A

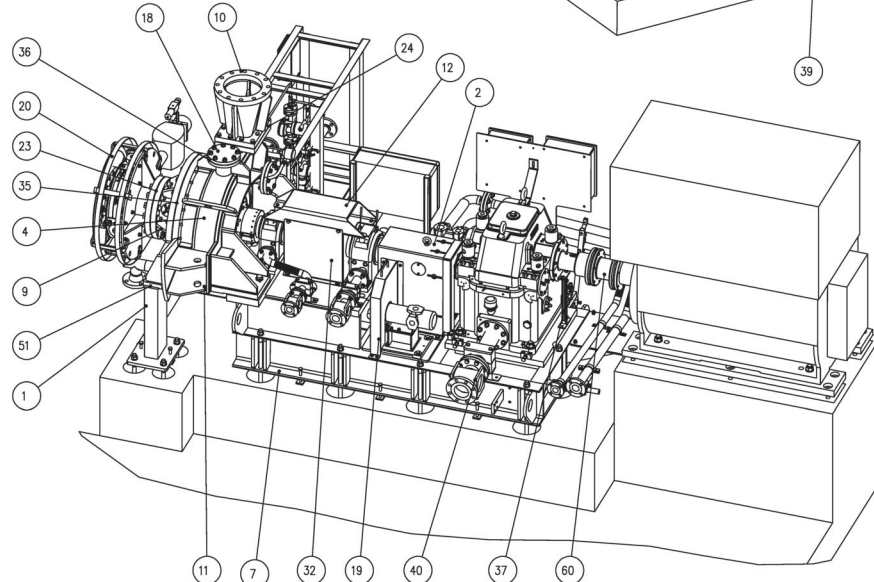
A-A  
SCALE 1:4

ROTOR ASSEMBLY DETAILS SEE DRAWING NFF000191000594\_5

66	1	XXXX00191005120_3	-	RTD 214C, ROSEMOUNT			214CRT	1.0
65	1	XXXX00191005120_2	-	RTD 214C, ROSEMOUNT			214CRT	1.0
64	1	XXXX00191005120_1	-	RTD 214C, ROSEMOUNT			214CRT	1.0
63	1	XXXX00191001923_1955	-	COUPLING, FLENDER MEN 203-6			D1=89 D2=85, DSBC=180	31.9
62	1	XXXX00191005440	-	GASKET TAPE		#PTFE	14x5 L=1.0 meters	0.9
61	2	XXXX00191004638	-	VELOCIMOT, METRIX ST6917			METRIX, TYPE: ST6917, 1 A-28 UNF	0.2
60	1	XXXX00191004473	-	COUPLING, FLENDER MEN 268-6			D1=73 D2=127, DSBC=180	69.6
59	2	XXXX00191004384	-	V-BELT			HMCc, SEE LUBE BOM	0.7
58	1	XXXX00191004383	-	BELT PULLEY			HMCc, SEE LUBE BOM	121
57	1	XXXX00191004382	-	MECHANICAL PUMP			SS 030, BY HMCc	40.6
56	1	XXXX00191000682	-	JUNCTION BOX			SEE WIRING DIAGRAM NFF00019005008	47.4
55	1	SM004951_EN	A	WARNING SIGN - HATCH		SS	HATCH WARNING SIGN - ENG	0.2
54	1	SM005319	-	INSPECTION STICKER				0.0
53	10	SM004990	-	ADJUSTING BLOCK				0.8
52	2	SM004978	-	CENTERING WASHER ASSEMBLY				0.2
51	1	SM004954	A	SHM PACKAGE - STABILIZER				0.1
50	1	SM004953	A	WARNING STICKERS				0.0
49	1	05005289_DN_85	-	FLEXITALIC SPIRAL WOUND GASKET		AS1316L/PTFE	DN85 PN10-PN40	0.2
48	2	05004994_65X3_0_FPM	-	O-RING		FPM	OR 65X3 FPM	0.0
47	2	05003332_N12N1852	-	REDUCER, FEMALE TO MALE	EN 1.4307		SS-8-RA-2 NPT 1/2" TO NPT 1/8"	0.1
46	2	05003332_N12D1254	-	THREAD ADAPTER, Swagelok # SS-8-A-BRS	EN 1.4404		FEMALE NPT 1/2"-14 TO MALE BSPP G1/2"	0.1
45	2	05000238_186AD452	-	NOZZLE, NPT 1/8 GA-3.9	EN 1.4307		FULLETT NPT 1/8 GA-3.9	0.1
44	2	05004301	-	BEARING RTD, AXIAL			ROSEMOUNT, TYPE: MW-GOK 3	0.1
43	1	NFF000191005019	-	NITROGEN BUFFER SYSTEM			HRO DRG RX19105-SEAL	227
42	1	NFF0001910_13039	-	LUBE UNIT, GEAR			HMCc DRG: 13031	216.4
41	1	NFF0001910_13030	-	LUBE UNIT, FAN BEARINGS			HMCc DRG: 13030	272.3
40	1	NFF000191005630	-	GEAR OIL RETURN				38.7
39	1	NFF000191005590	-	COVER				8.7
38	1	NFF000191005589	-	COVER				9.4
37	1	NFF000191005563	-	BRACKET FOR SPEED SENSOR				1.8
36	3	NFF000191005561	-	GASKET, ANSI 10"		SILICONE		0.1
35	1	NFF000191005507	-	GASKET		SILICONE		0.8
34	1	NFF000191005464	-	COUPLING COVER, GEAR MOTOR				35.3
33	1	NFF000191005372	-	MOTOR OIL OUTLET PIPING				62.5
32	2	NFF000191005354	-	SHAFT COVER		S235JR		7.3
31	1	NFF000191005009	-	P&ID DRAWING				0.0
30	1	NFF000191005008	-	JUNCTION BOX WIRING DIAGRAM				0.0
29	1	NFF000191004959	-	BACK BEARING OIL RETURN				14.4
28	1	NFF000191004958	-	FRONT BEARING OIL RETURN				11.0
27	1	NFF000191004914	-	MACHINE SIGN				0.2
26	1	NFF000191004680	-	ADJUSTING BLOCK				0.8
25	1	NFF000191004671	-	MECHANICAL PUMP BRACKET		S235JR		13.0
24	1	NFF000191004655	-	GASKET		SILICONE		0.4
23	1	NFF000191004654	-	GASKET, ANSI 10"		SILICONE		0.5
22	2	NFF000191004125	-	INLET NOZZLE PIPE	EN 1.4410			1.8
21	1	NFF000191004081	-	SHAFT COVER		S235JR		2.4
20	1	NFF000191004078	-	THERMO BLANKET SUPPORT, BY MADER		S235JR	MADER DRG: MD-8086-4	5.0
19	1	NFF000191004071	-	BELT COVER		S235JR		10.3
18	1	NFF000191003786	-	COVER				9.4
17	1	NFF000191003305	-	CASING DRAIN ANSI 2-1/2 300 lbs	EN 1.4410			11.5
16	1	NFF000191002938	-	BRACKET FOR SPEED SENSOR				1.5
15	2	NFF000191002933	-	SUPPORT BEAM				4.3
14	1	NFF000191002923	-	LUBE SKD				1282.7
13	1	NFF000191002873	-	SHAFT SEAL ASSEMBLY	EN 1.4410			43.9
12	1	NFF000191002869	-	BEARING STIFFENER				21.9
11	1	NFF000191002868	A	CASING MACHINING	EN 1.4410			710.9
10	1	NFF000191002270	-	DIFFUSOR	EN 1.4410			81.5
9	1	NFF000191002495	B	INLET MACHINING	EN 1.4410			280.5
8	1	NFF000191002443	-	MOTOR			BY CUSTOMER	0.5
7	1	NFF000191002255	-	LOW PEDESTAL	S235JR			1464.0
6	1	NFF000191002241	-	MECHANICAL PUMP GUIDE PLATE	S235JR			8.1
5	1	NFF000191001127	-	SLIDE BEARING ASSEMBLY				261.3
4	1	NFF000191000900	A	IMPELLER				64.0
3	1	NFF000191000460	-	INLET GUIDE VANE, BY MADER	EN 1.4410		MADER DRG: MD-8086	356.1
2	1	NFF000191000228	-	COUPLING COVER	S235JR			30.3
1	2	NFF000191000122	-	STABILIZER	S235JR			48.8

LUBE UNITS AND HOSES NOT SHOWN  
IN BELOW VIEW

SCALE 1:25



NOTES:

BOMS OF THE LUBRICATION UNITS & NITROGEN PURGE ARE NOT INCLUDED ON THIS DRAWING.

SEALS:

- O-RING FOR IN-PROCESS LOCATION: VITON TM / FPM

WORLEY DOCUMENT NO. 408084-14122-03-(200-KB-103A)-A01-0001-001

HRO Project No.: RX19105 (NFF00019)  
Equipment Tag: 200-49-103  
Fan Model: HBXK-20/675  
Rotation: CCW (view from motor to fan)  
Control Method: VFD & IGV

FOR GENERAL ASSEMBLY, SEE DRG. NFF000191000594 SHEET 1  
FOR FOUNDATION AND CoG's, SEE DRG. NFF000191000594 SHEET 2  
FOR MAIN ASSEMBLY BOM, SEE DRG. NFF000191000594 SHEET 3  
FOR PLAN VIEW, SEE DRG. NFF000191000594 SHEET 4  
FOR ROTOR ASSY & CLEARANCE, SEE DRG. NFF000191000594 SHEET 5  
FOR HARDWARE AND HOSES, SEE DRG. NFF000191000594 SHEET 6

In Work

Date 11/11/2019	Department IF 405	Code	Rev	General Tolerances ISO 2768-mK EN ISO 13920 BF	Replacing	Replaced with	Total weight	7533 kg	
Drawn by SX	Checked by	Approved by			Related to				
				MAIN ASSEMBLY NFF00019 HBXK-20-LGO		Drawing nr NFF000191000594		Sheet 3(6)	Rev. -
Scale 9:250				In Work		Drawing nr NFF000191000594		Sheet 3(6)	Rev. -

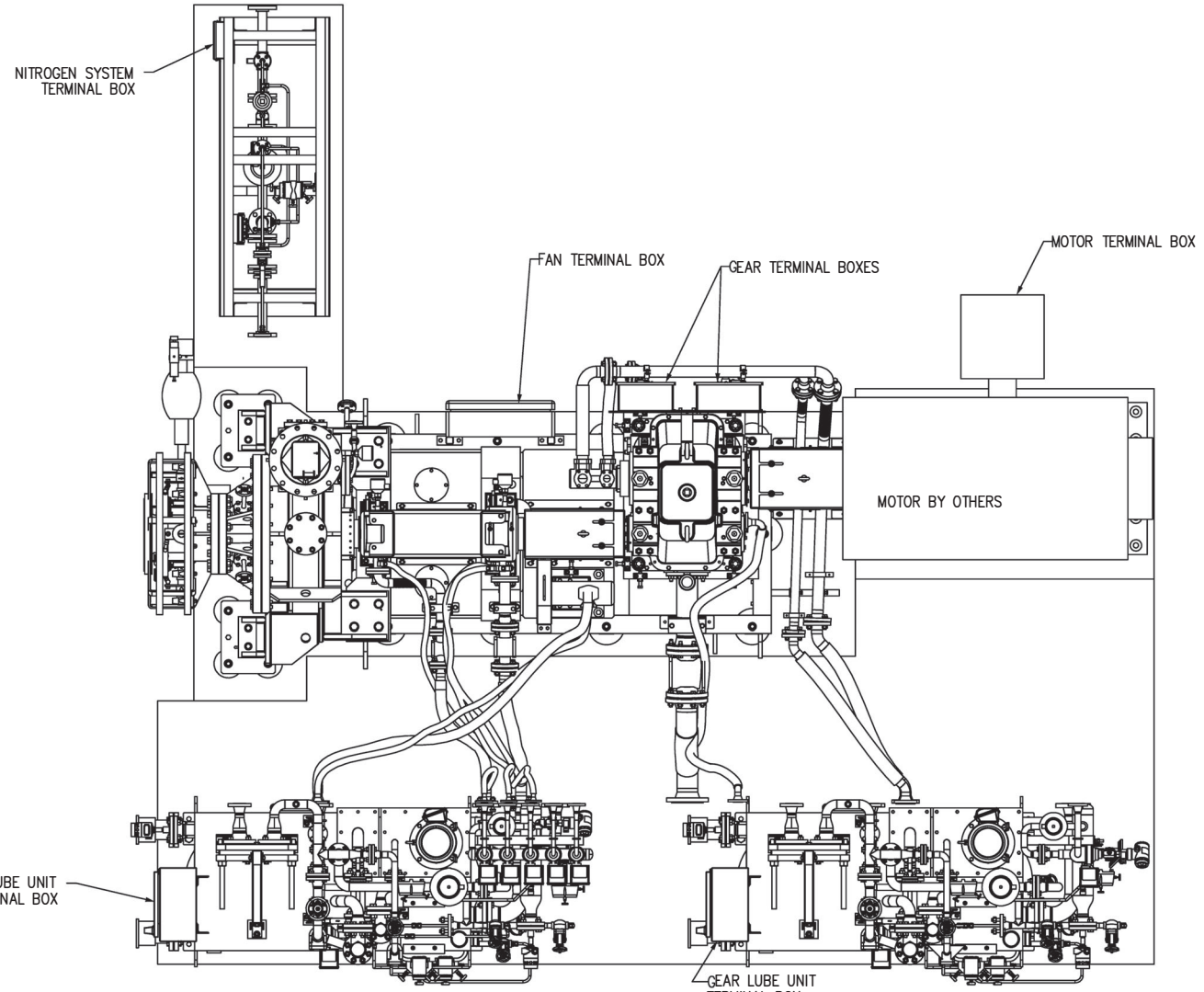
Rev.	Modification	Date	Sign

This document and its contents is the property of Howden Turbo Form and may not be copied or reproduced in any form without the prior written consent. It must be returned upon request. Continuations will be provided.

Drawing: NFF000191000594  
Made: 11/03/2019

This document and its contents is the property of Howden Turbo Fans and may not be copied or otherwise disclosed to any third party without our written consent. Requests for reproduction will be prosecuted.

Drawing: NFF000191000594  
 Model: NFF000191000594



HRO Project No.: RX19105 (NFF00019)  
 Equipment Tag: 200-KB-103  
 Fan Model: HBxR-20/675  
 Rotation: CCW (view from motor to fan)  
 Control Method: VFD & IGV

FOR GENERAL ASSEMBLY, SEE DRG. NFF000191000594 SHEET 1  
 FOR FOUNDATION AND CoG's, SEE DRG. NFF000191000594 SHEET 2  
 FOR MAIN ASSEMBLY BOM, SEE DRG. NFF000191000594 SHEET 3  
 FOR PLAN VIEW, SEE DRG. NFF000191000594 SHEET 4  
 FOR ROTOR ASSY & CLEARANCE, SEE DRG. NFF000191000594 SHEET 5  
 FOR HARDWARE AND HOSES, SEE DRG. NFF000191000594 SHEET 6

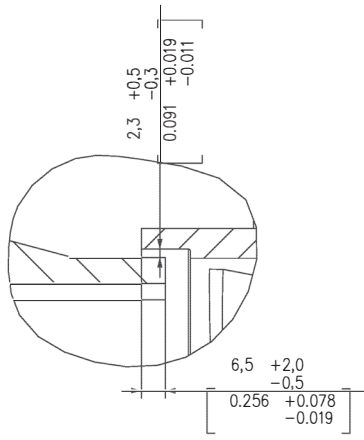
WORLEY DOCUMENT NO. 408084-14122-03-(200-KB-103A)-A01-0001-001

Qty	Nr	Code	Description	Material	Designation, dimensions	Weight/pc
						7533.0
Date	Department		General tolerances ISO 2768-mK EN ISO 13920. BF	Replacing	Replaced with	Total weight 7533 kg
11/11/2019	IF 405	Approved by		Related to		
Drawn by	Checked by					Sheet 4(6)
SX						
			<b>MAIN ASSEMBLY</b> NFF00019 Scale: 1:25 HBxR-20-LGO			Drawing nr NFF000191000594
In Work						

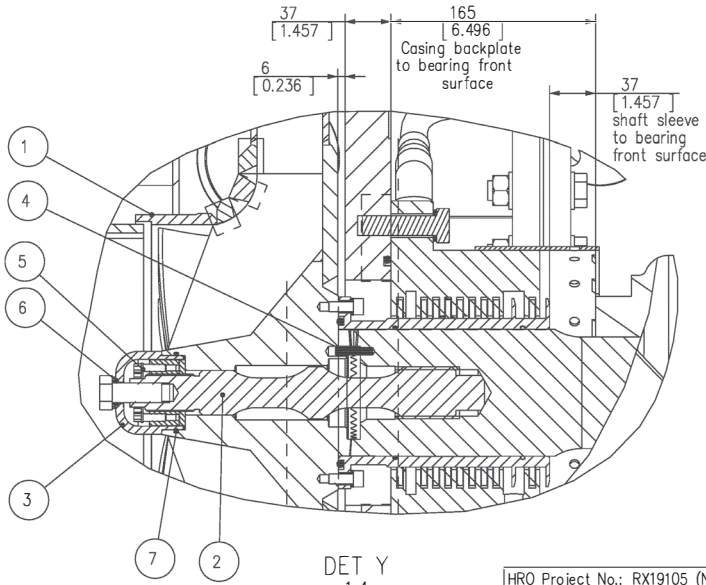
Rev.	Modification	Date	Sign

This document and its contents is the property of Howden Turbo Fans and may not be copied or reproduced without the written consent of our company. It must be returned upon request. Contraventions will be prosecuted.

Drawing: NFF000191000594  
 Model: NFF000191000594



DET X  
3:4



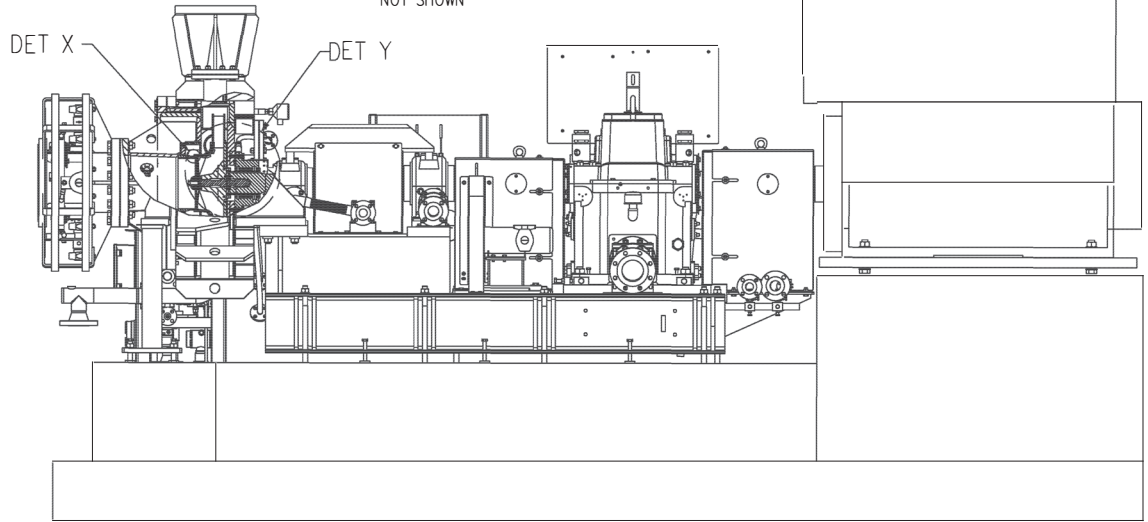
DET Y  
1:4

NOTE:  
 IMPELLER INSTALLED IN HORIZONTAL POSITION FOR BALANCING.  
 PIN ITEM 4 MUST POINT VERTICALLY UPWARDS.

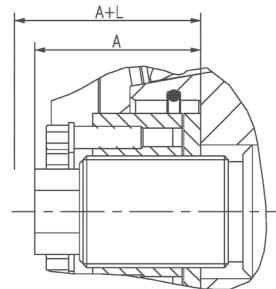
WORLEY DOCUMENT NO.  
 408084-14122-03-(200-KB-103A)-A01-0001-001

HRO Project No.: RX19105 (NFF00019)  
 Fan Model: HBxRc-20/675  
 Rotation: CCW (view from motor to fan)  
 Control Method: VFD & IGV

LUBE UNITS & HOSES ON THE LEFT HAND SIDE NOT SHOWN



A-A



D-D  
3:4

SOCKET WRENCH	50% TORQUE	100% TORQUE	EXTENSION L (mm)	TOLERANCE (mm)	A (mm)
SW 20	125 Nm	250 Nm	0.43	+0.10 mm	46

A: DIMENSIONING WITH FORCING SCREWS MANUALLY TIGHTENED

L: EXTENSION OF THE TENSION BOLT AT 100% TORQUE.

FOR GENERAL ASSEMBLY, SEE DRG. NFF000191000594 SHEET 1  
 FOR FOUNDATION AND CoG's, SEE DRG. NFF000191000594 SHEET 2  
 FOR MAIN ASSEMBLY BOM, SEE DRG. NFF000191000594 SHEET 3  
 FOR PLAN VIEW, SEE DRG. NFF000191000594 SHEET 4  
 FOR ROTOR ASSY & CLEARANCE, SEE DRG. NFF000191000594 SHEET 5  
 FOR HARDWARE AND HOSES, SEE DRG. NFF000191000594 SHEET 6

N	Qty	Code	Rev	Description	Material	Designation, dimensions	Weight/pc
7	1	XX000191004994_59_5_3	-	O-RING	FPM	OR 75X3 FPM	0.0
6	1	XX000191004994_16_3	-	O-RING	NBR 70	OR 12X1 NBR 70	0.0
5	1	XX000191005463	-	SUPER BOLT, MT-M30		MT-M30X2 /W	0.4
4	1	XX000191004976	-	DOWEL PIN	ST	DIN 7 6x30	0.0
3	1	NFF000191005461	-	HUB END COVER			0.5
2	1	NFF000191005459	-	CENTER BOLT	EN 1.4462		1.7
1	1	NFF000191000900	A	IMPELLER			64.0

Date	Department	General tolerances	Replacing	Replaced with	Total weight	7533 kg
1/11/2019	IF 405	ISO 2768-mK EN ISO 13920 BF				
Drawn by SX	Checked by	Approved by	Related to			

MAIN ASSEMBLY, IMPELLER INSTALLATION

Scale  
 1:25  
 NFF00019  
 HBxRc-20-LG0



Drawing nr NFF000191000594 Sheet 5(6) Rev. -

Rev.	Modification	Date	Sign

In Work